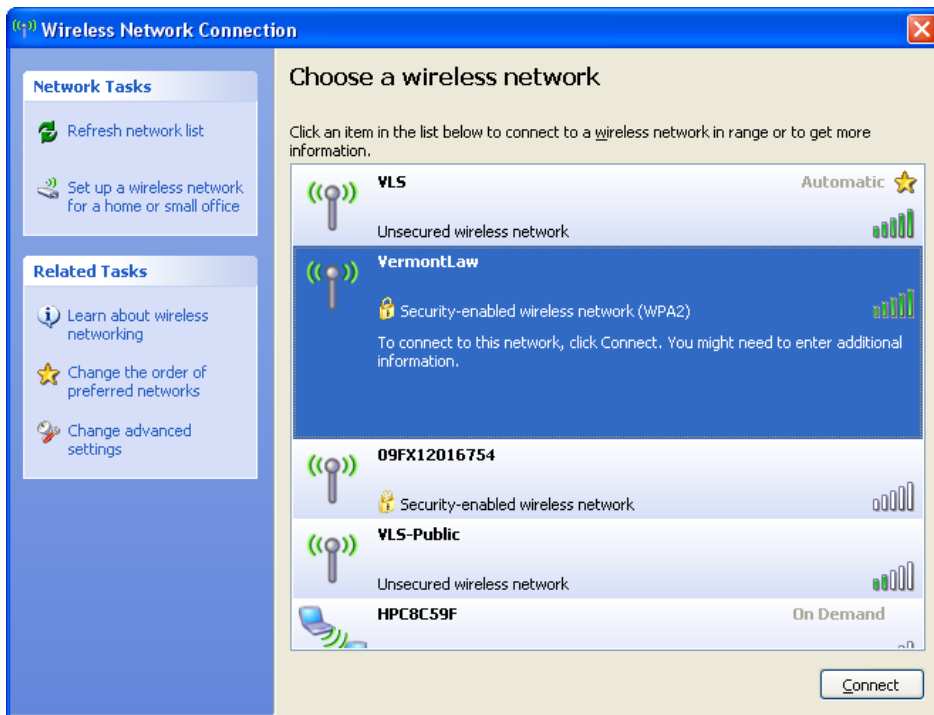
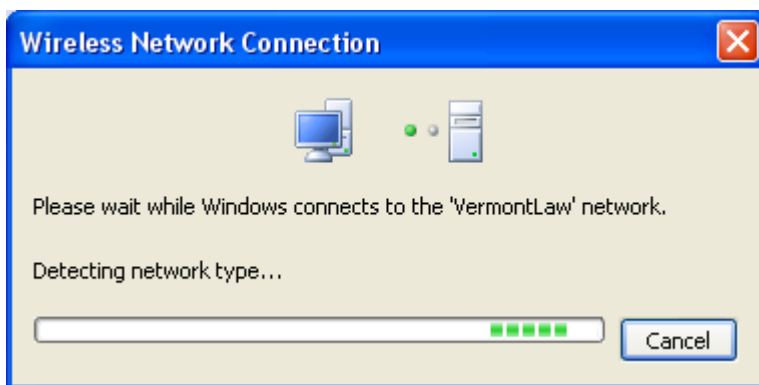


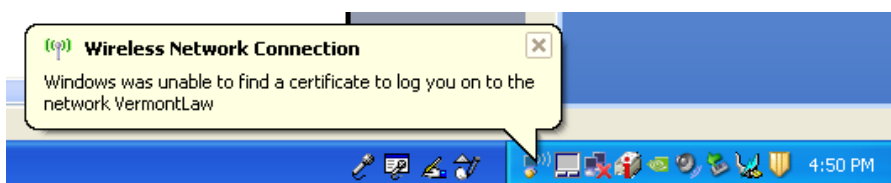
Connecting to the VermontLaw Wireless with Windows XP's Integrated Wireless Networking Software



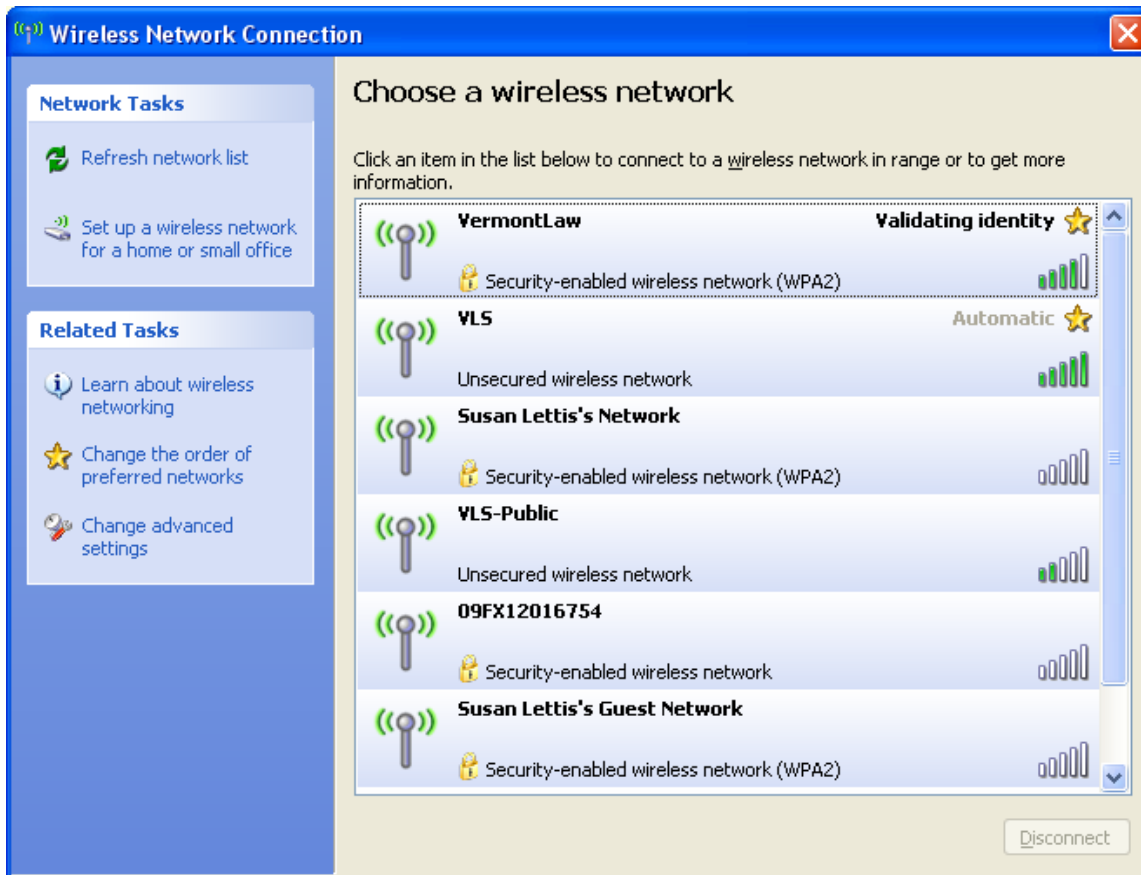
Step 1: Open the Wireless Network Connection Software, click on VermontLaw, then Connect



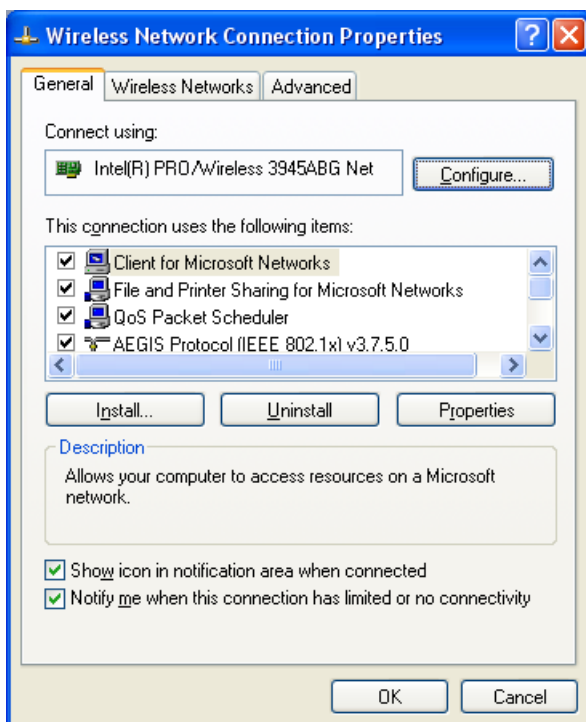
Step 2: Your computer should attempt to connect to the network...



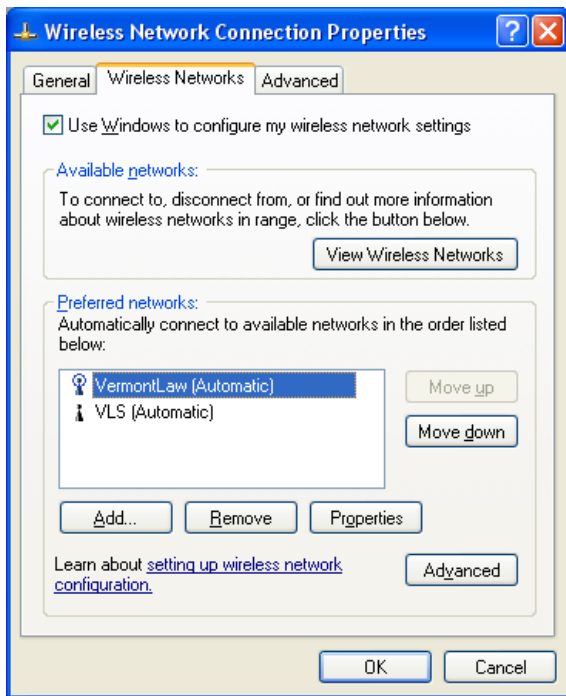
Step 3: Your Computer will likely notify you towards the task tray that "Windows was unable to find a certificate to log you on to the network VermontLaw." If it doesn't, that's great.



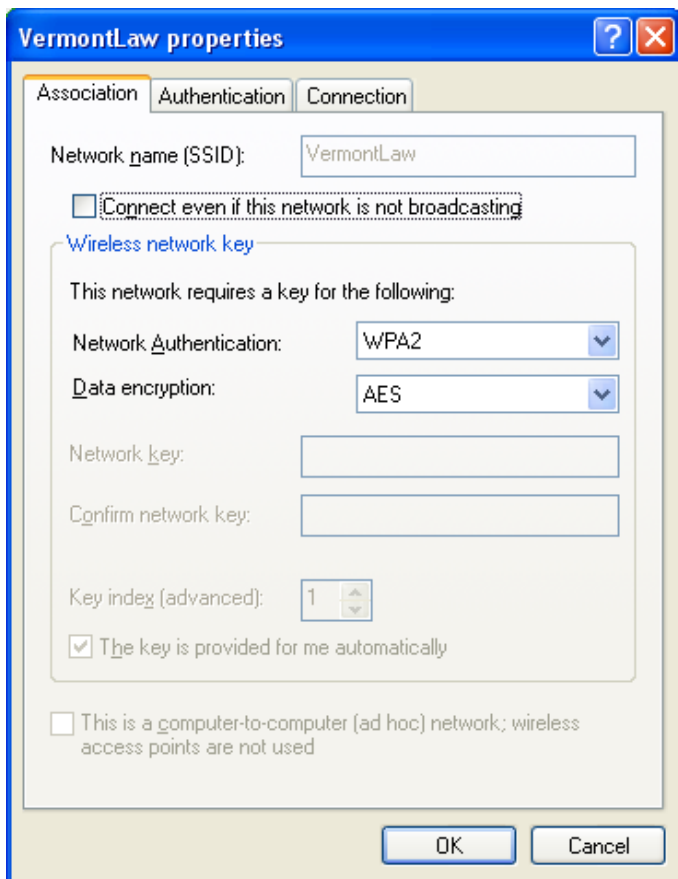
Step 4: If you did receive the notification shown in Step 3 about “Windows being unable to find a certificate to log you on” then In the Wireless Network Connection dialog box shown above, click on “Change Advanced Settings” in the left panel area under the Related Tasks header.



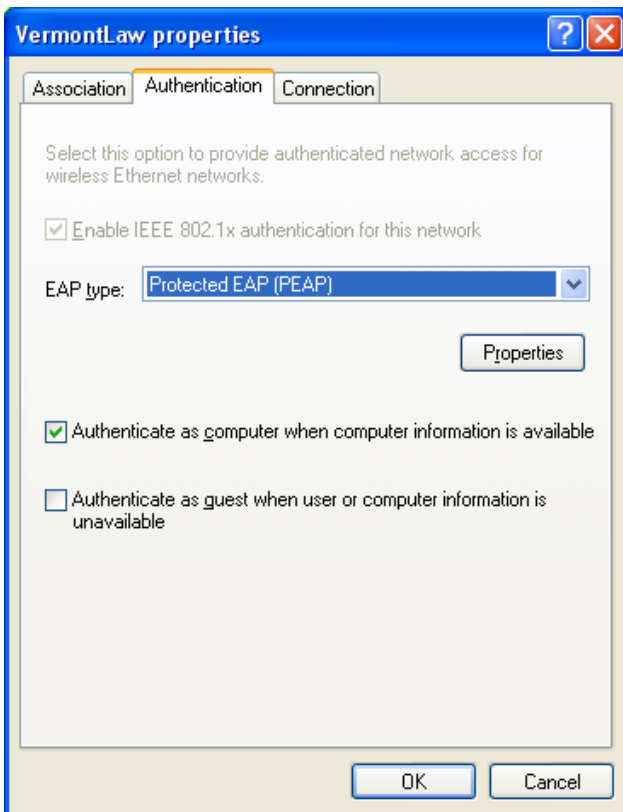
Step 5: Within the Wireless Network Connection Properties dialog box, Select the Wireless Networks tab



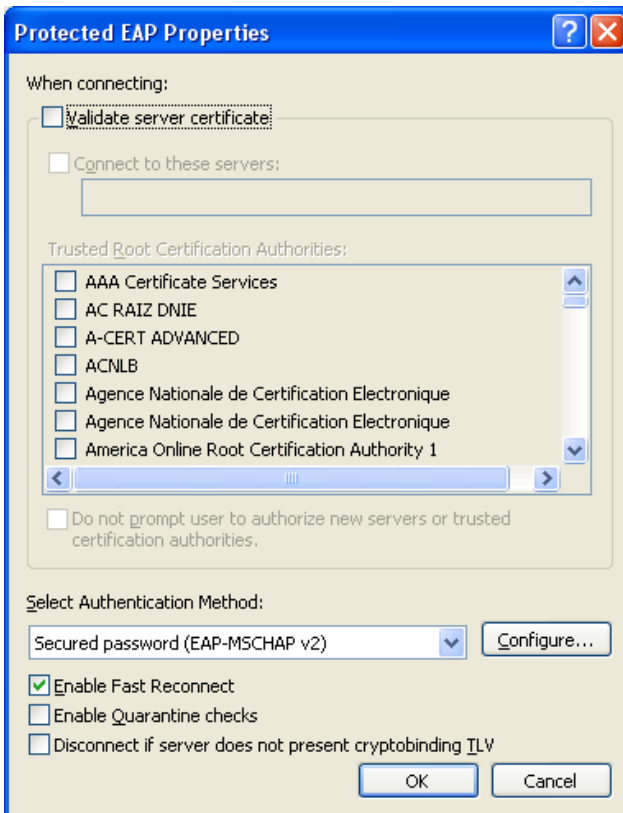
Step 6: Click on "VermontLaw (Automatic)" in the Preferred Networks list to highlight it. Then Click on the Properties button.



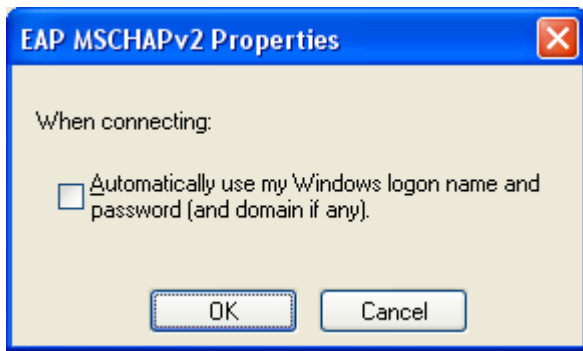
Step 7: In the Properties dialog box, on the Association Tab, ensure that Network Authentication is set to "WPA2" and that Data Encryption is set to "AES," then select the Authentication tab



Step 8: Ensure that "EAP Type" is set to "Protected EAP (PEAP)," then Click on Properties.

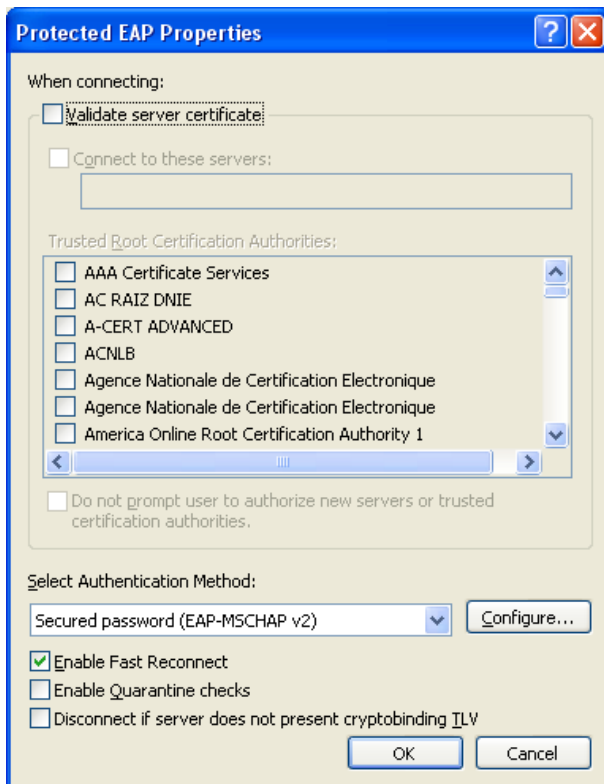


- Step 9:
1. Within the Protected EAP Properties dialog box, uncheck "Validate Server Certificate."
 2. Make sure that Select Authentication Method is set to "Secured Password (EAP-MSCHAP v2)"
 3. Click on Configure.

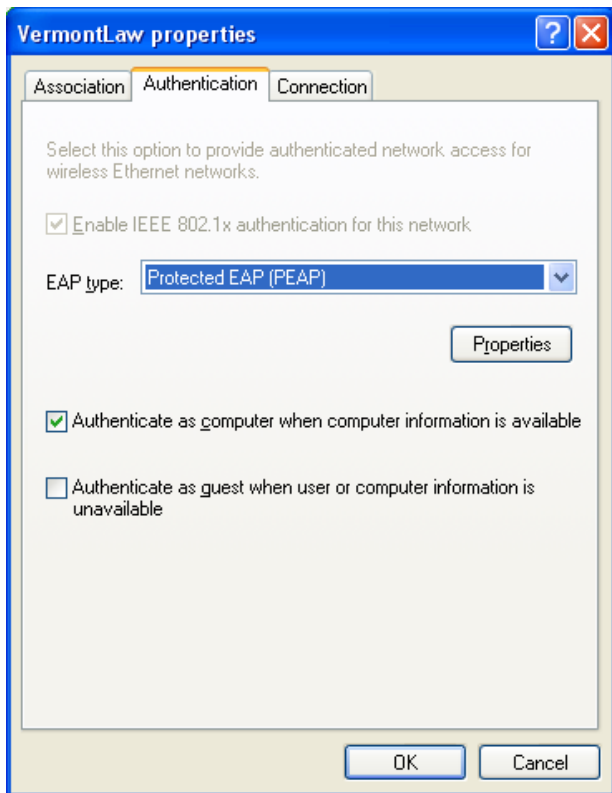


Step 10: 1. Make sure that "Automatically use my Windows Logon Name and password (and domain if any) is unchecked.

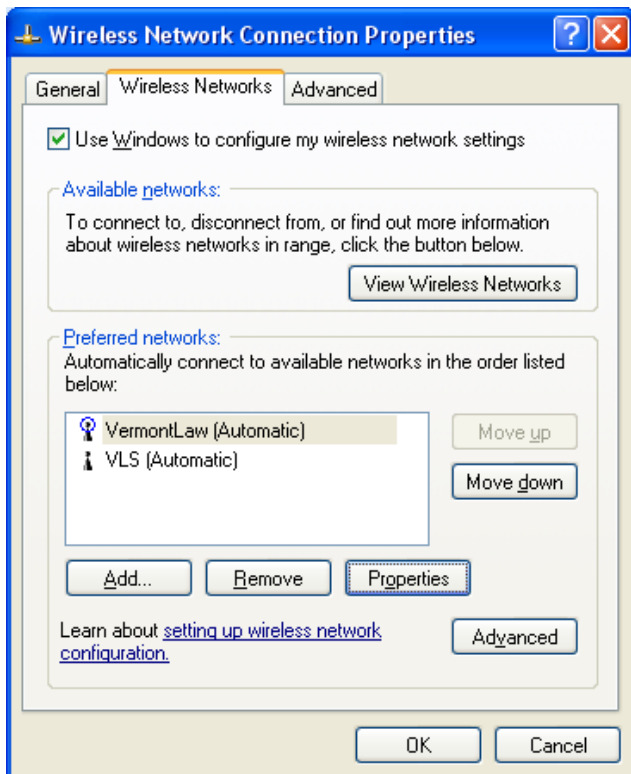
2. Click OK.



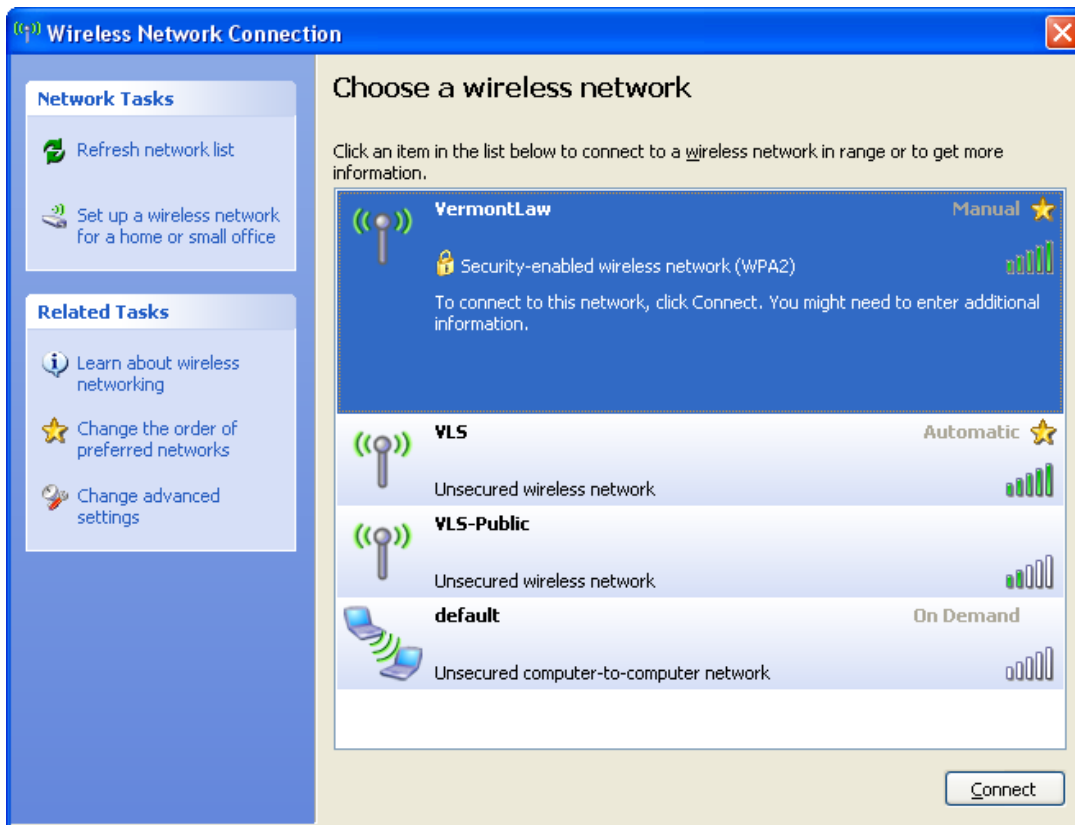
Step 11 – Click OK



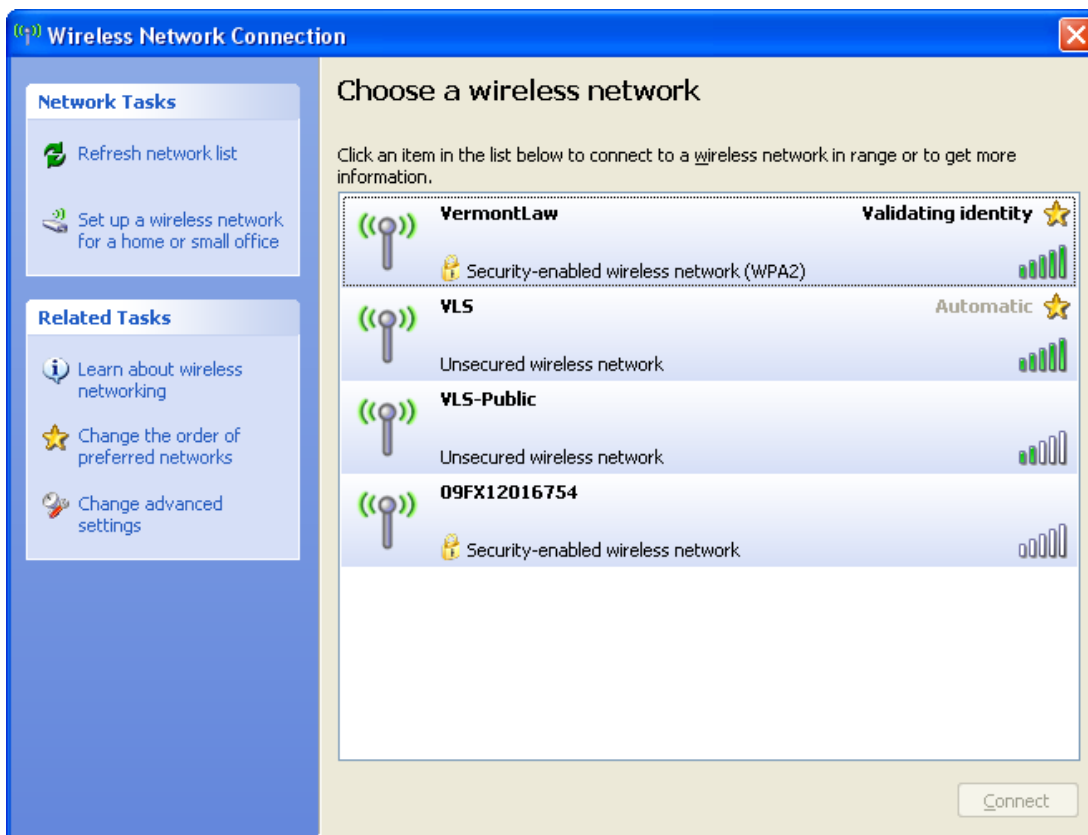
Step 12 – Click OK



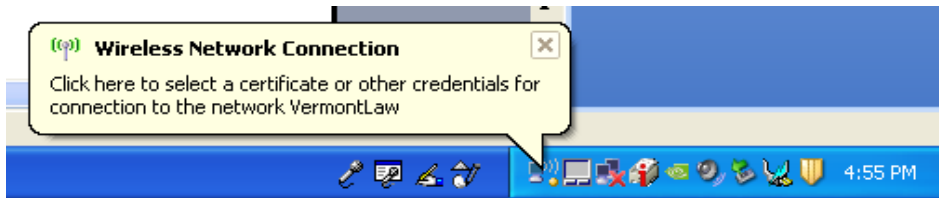
Step 13 - Click OK



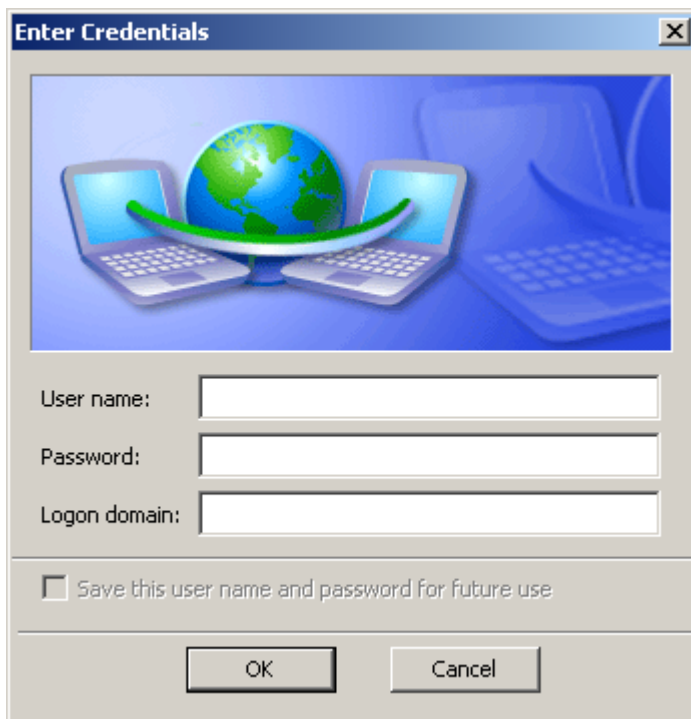
Step 6 - Click on VermontLaw to highlight it, Click on Connect



Step 7 - If you see a notification balloon such as this, click on it.



Step 16 - If you see a notification balloon such as this, click on it.



Step 8 - Your computer should show you a dialog box such as this, enter your Novell eDirectory credentials in the User Name and Password fields, (leaving Logon Domain blank) and hit OK



Step 9 - In the system tray should now see an icon that looks like a computer with two vibration waves coming out of it (in the figure, the icon on the left.) If you hover over the icon with your mouse, it should show you something like you see in the figure