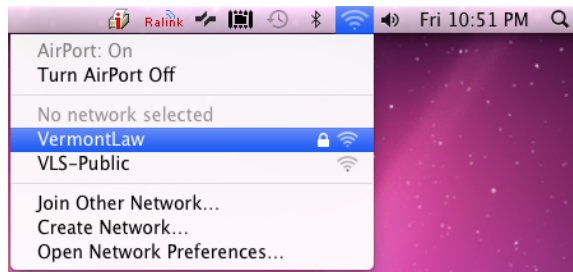


Connecting to the VermontLaw wireless network on a Mac

Click on the Airport icon and select **VermontLaw**



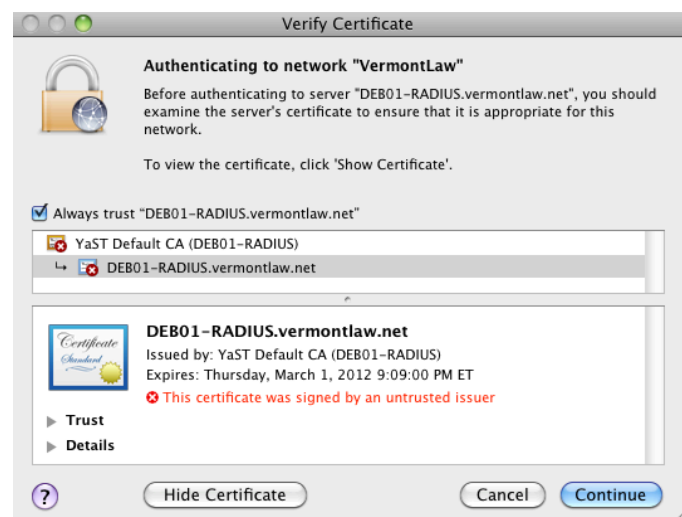
Type your VermontLaw username and password in the box below



In the Verify Certificate window, click **Show Certificate**

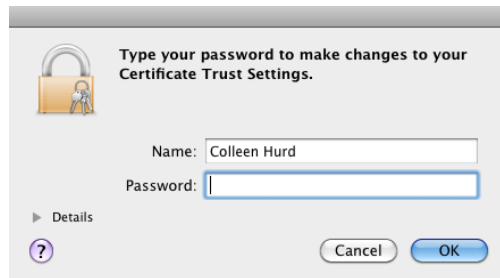


Make sure the box that says **Always Trust ...** has a checkmark in it, as shown to the right, then click **Continue**



Connecting to the VermontLaw wireless network on a Mac

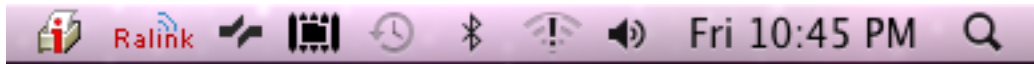
You will then need to put in your computer username and password in the box below to allow the change to the certificate trust settings. Click **OK**



NOTE: Often this window will disappear after you click OK, and another one comes up but it is behind the Verify Certificate window. Move this window to check for this, and reenter your Mac username and password if necessary.

You should now be connected to the VermontLaw wireless.

TROUBLESHOOTING



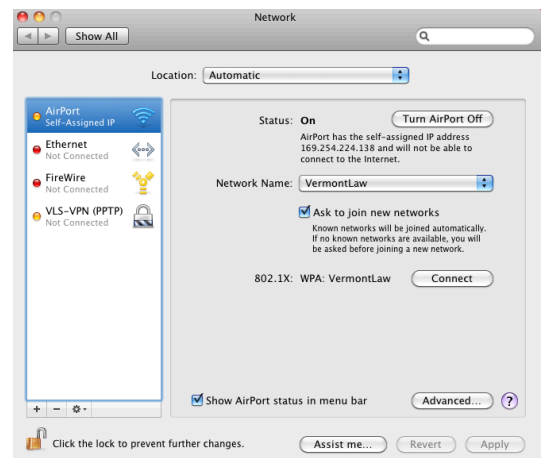
If you see an exclamation mark over the Airport icon, try the following troubleshooting steps:

Click on the Airport icon and select **Open Network Preferences**

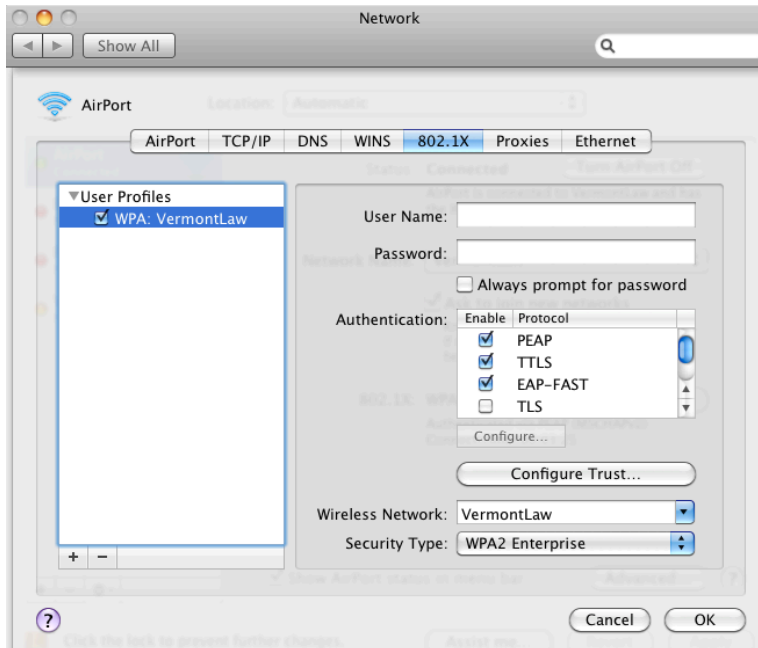


You will probably see an IP address similar to the one in the image to the right

Click on the **Advanced** button



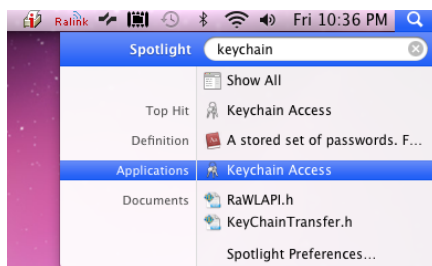
Connecting to the VermontLaw wireless network on a Mac



Select the **802.1X** tab

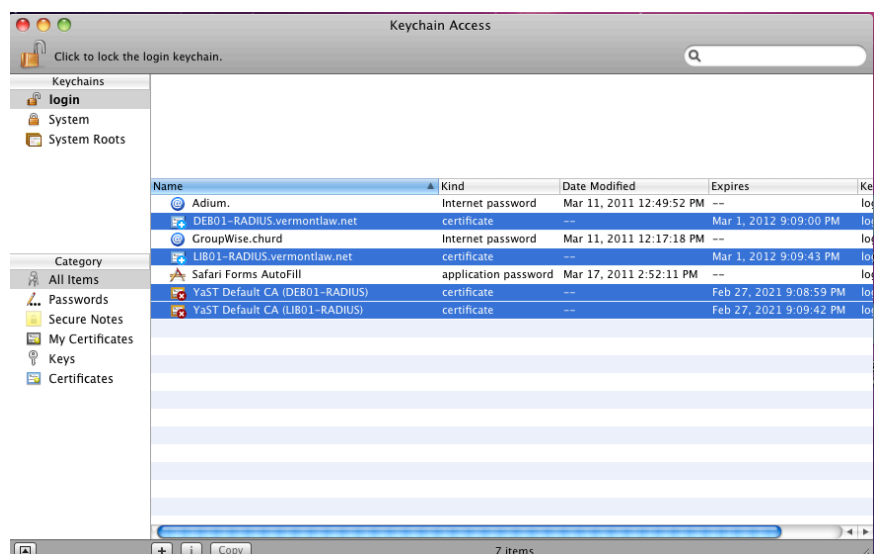
There should only be one profile for VermontLaw, with the settings exactly as you see here. If there is more than one, or there is password information stored, delete all the profiles by selecting them and clicking the minus sign at the bottom left of the profile window. Click **OK**, then click **Apply** in the next window.

Go to the Spotlight box at the top right of the screen and type the work **keychain**



Click on the **Keychain Access** application to open it

Select any of the highlighted items that are present by holding the command key and clicking on each. Go to **Edit > Delete**.

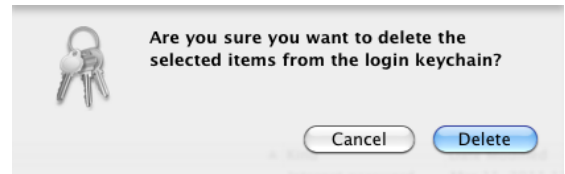


Connecting to the VermontLaw wireless network on a Mac

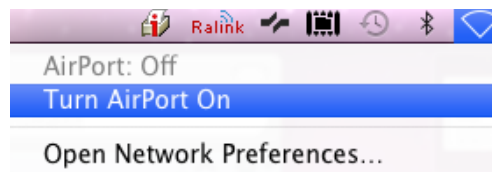
When you see the warning below, click **Delete**.



This will not actually delete the entries – you will need to select them all again and go to Edit > Delete a second time. When you click delete in the window to the right, the entries will be deleted.



Turn Airport off, then turn it on again.



Now you can reestablish the connection by following the first time connection procedure.