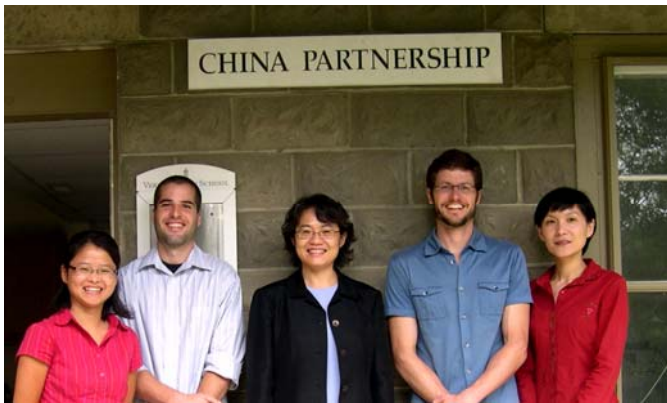




## Campus Profile

### U.S.-China Partnership for Environmental Law



Representatives from the China Partnership: Yuling Liu, Tiago Sousa, Siu Tip Lam, Adam Moser, and Hanling Yang

The U.S.-China Partnership for Environmental Law is a collaborative program Vermont Law School developed to build capacity among individuals and academic, government, and private-sector institutions in China to solve its pollution and energy problems. With funding from the U.S. Agency for International Development, the partnership has trained since 2006 more than 1,500 individuals in environmental and energy law and helped one of our partner law schools in China launch its environmental law juris master degree program. Our implementing partners are Sun Yat-sen University Law School (SYSU), the Center for Legal Assistance to Pollution Victims (CLAPV) at the China University of Political Science and Law, the Training Center of China's National Development and Reform Commission, and the China Environment Forum at the Woodrow Wilson International Center for Scholars. We have also established close working relationships with key Chinese governmental agencies, including the Ministry of Environmental Protection and the State Electricity Regulatory Commission.

The partnership has also developed programs to improve legal representation and advocacy for pollution victims and to educate the public concerning their rights under environmental protection laws. In 2010, with funding from the State Department's Educational and Cultural Affairs Bureau, the partnership led an exchange program for 18 young environmental professionals from China and the U.S. to enable them to jointly examine

environmental justice and climate change issues in both countries. In addition, with a new three-year grant from the State Department's Democracy, Human Rights and Labor Bureau, the partnership will help CLAPV establish China's first environmental public interest law firm and will assist SYSU to expand its environmental law clinic to provide legal services to pollution victims and workers in environmental health and safety cases.

With Professor Tseming Yang's recent appointment as U.S. Environmental Protection Agency's Deputy General Counsel for International Affairs, Siu Tip Lam succeeded him as the new director for the partnership. Joining the program team, which includes associate director Jingjing Liu, LLM fellow Adam Moser, and program assistants Amanda McAdams (Tiago Sousa is filling in for Amanda while she is on maternity leave) and Yuling Liu, are Hanling Yang as a new associate director, who started in July, and Yanmei Lin as a new assistant director, who will start in September.

+++++

### Environmental and Natural Resources Law Clinic



Some of the ENRLC team on a trip to Pleasant Point, Maine: Maximilian Merrell, Leslie Welts, Jordan Gonda, Elizabeth Newbold, Teresa Clemmer, and Hannah Clemmer

The ENRLC is thriving as it enters its seventh year of operation.

The ENRLC has experienced a transition in staffing during the summer. On August 4<sup>th</sup> Director David Mears and his family departed the U.S. to spend the academic year in China. David is a Fulbright scholar and will be teaching and assisting environmental law clinics. While David is away Teresa Clemmer serves as acting director. Sheryl Dickey, clinic fellow from 2008-10, will be staying with the ENRLC until next summer as assistant professor and staff attorney. Ken Rumelt is the newest

Vermont Law School | 164 Chelsea Street, PO Box 96 | South Royalton, Vermont 05068

fellow and will be with the clinic from 2010–12. Beth Rodger has joined the clinic as administrative assistant to provide much needed support.

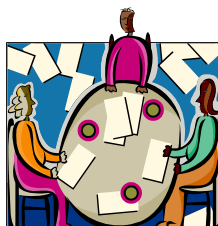
The clinic’s current projects are focused on pollution, such as water discharges and air emissions; agricultural issues, including concentrated animal feeding operations (CAFOs); petitioning the Environmental Protection Agency to revoke Vermont’s authority to manage its water quality; toxic materials; coal and coal-mining issues; endangered species, and climate change. The clinic is never at a loss for projects as the number of requests for assistance from citizens and environmental groups is consistently high.

In the past several months, our students have often been liberated for out-of-office adventures. Students visited contaminated sites in New Hampshire, Massachusetts, and Pennsylvania to collect data for possible projects. Two summer students, Jason Loh and Sofia Yazykova, were of invaluable assistance to David Mears during a June trial in the Vermont Environmental Court regarding an ANR permit allowing an extension to Champlain Marina on Lake Champlain. The clinic was recently successful in achieving a victory for a group of members of the Passamaquoddy Tribe in Maine. After more than five long years and the work of many students, faculty, and staff, the Bureau of Indian Affairs cancelled a lease allowing a liquefied natural gas company to locate a terminal on sacred tribal land. At the end of July, Jordan Gonda, Melissa Krah, Jason Loh, Maximilian Merrell, Elizabeth Newbold, Leslie Welts, Sophia Yazykova, Teresa Clemmer and family, Monica Litzelman, and Michelle Walker traveled to Pleasant Point, Maine to visit the tribe members and celebrate the lease cancellation. Around a sunset campfire on the sacred site of Split Rock, the members described their experiences of both joy and sadness during the past five years and gave their heartfelt thanks to VLS and the ENRLC. There were a few tears among the VLS contingent after the tribe members said they would never have been able to stand against a powerful energy company without the ENRLC’s assistance and then sang a touching Passamaquoddy song of thanks. This wonderful experience illustrated to the students just how powerful the clinic and its clients can be.

This summer, the ENRLC welcomed the new Land Use Clinic (LUC). Under the direction of Peg Elmer and with guidance from the ENRLC legal team, the LUC addresses legal and policy dimensions of the use of land—from affordable and energy-efficient housing and promotion of sustainable agriculture to prevention of pollution—for the benefit of the land use community and the public interest.

The ENRLC is ready for the new LUC and ten new students as the academic year begins. The clinic is an exciting place to be!

\*\*\*\*\*



## New Staff Members

### Christopher Brooks

Christopher (MELP’07/JD’10) joins the ELC team in the newly created position of research associate for environmental policy and the new economy. He assists



Professor Gus Speth with various “new economy” projects. Prior to attending VLS, Chris served as a legal intern at the Southern Environmental Law Center in Atlanta and at the Two Rivers Ottauquechee Regional Planning Commission in Woodstock, Vermont. He received

his BA from the University of the South in Tennessee. He currently lives in Bethel with his partner, Jett Vaden.

### Lori Campbell



Lori joins the buildings and grounds department as administrative assistant. She grew up in Sharon, served as operations manager for the Hanover Co-op, moved to Arizona and Colorado and has recently relocated back to the area. She, her husband, and two rescue dogs will soon be moving to Randolph Center.

### Tong Jett

Tong returns to VLS—having served as the China partnership’s first administrator—as grant accountant. She



currently oversees eight federal grants and performs other accounting functions for the business office. Just prior to coming back to VLS, Tong worked for the University of Arkansas as a systems documentation specialist and earned a BS in accounting. She also earned a BA and MA in business administration from

Vermont Law School | 164 Chelsea Street, PO Box 96 | South Royalton, Vermont 05068

Stephen A. Austin State University in Texas. She currently lives in Montpelier.

School of Law, and a BA from Reed College in Portland, Oregon.

**Brian Jones**



Brian '10 joins VLS as a seasonal admissions recruiter, serving the admissions office throughout the fall. He will be on campus during the first part of the semester and will serve most of his time remotely from his home in North Carolina. He earned a BA and MS from University of West Florida

and served as a detective with the Pensacola Police Department. He calls Raleigh, North Carolina, home and lives there with his wife, Becky.

**Kevin Jones**



Kevin Jones has joined the Institute for Energy and the Environment in the newly created position of Smart Grid Project leader. Most recently, Kevin was the director of Power Market Policy for the Long Island Power Authority. He also held positions as the associate director of energy practice for Navigant Consulting

and the director of energy policy for the City of New York. Kevin has taught Managing Energy Issues as an adjunct professor at Rensselaer and has published and presented research on multiple energy issues. Kevin has a BS in finance from UVM, a master's in public affairs from the University of Texas, and received his PhD in management from Rensselaer Polytechnic Institute. He lives in Chittenden.

**Julie Krishnaswani**



Julie joins the Cornell Library staff as lawyer librarian and adjunct professor of law, having previously served as reference librarian and faculty services coordinator and associate professor at City University of New York School of Law, Law Library. She earned a

master's of library and information science degree from Pratt Institute, a JD from City University of New York

**Tom Loyzelle**



Tom serves as HVAC Manager for the buildings and grounds department. He has extensive experience as a mechanical designer having recently been employed by Lane Associates Consulting Engineers. Tom earned an associate's degree in applied science from Vermont Technical College and has

experience in the plumbing field. He currently resides in Pittsford.

**Kathy McCullough**

You'll find Kathy at the front desk in the business office, managing the switchboard, carrying out multiple tasks,



and in general, providing valuable assistance to the department. Kathy comes to VLS from Anchini, a luxury textile company based in Tunbridge, Vermont, where she served as office manager and as an e-commerce

specialist for their web store. She currently resides in Tunbridge with her husband, Mike.

**Misae Nishikura**



Misae joins the office of Career Services as an assistant director. She recently served as assistant dean for career development at the University of Denver, Sturm College of Law. Prior to that she worked as the vice president for legal affairs for Asia Investment Partners in Denver and taught Japanese at the University of Colorado at Boulder. She grew up in Japan, moving to the U.S. when

in high school. She received a BA from George Mason University; an MM from the University of Central Arkansas, and a JD from the University of Denver, Sturm College of Law. She and her husband live in Barnard.

Vermont Law School | 164 Chelsea Street, PO Box 96 | South Royalton, Vermont 05068



**Deanna Mello**

Deanna joins the Registrar’s office in the new position of clerk. She earned a JD at VLS and a BS from the University of Minnesota College of Natural Resources. Her previous work

experience includes endowment fund specialist at Dartmouth College and office manager of the Dartmouth Alumni Magazine. She is the widow of the late VLS Professor Michael Mello and lives in White River Junction.

**Beth Rodger**



We welcome Beth to the environmental clinics, ENRLC/LUC as administrative assistant. She comes to VLS from Dartmouth Hitchcock Medical Center where she served in a variety of human relations and administrative roles, including work in three

of the hospital’s specialty clinics. She grew up in Chelsea, is one of the founding owners of Cockadoodle Pizza Café, and earned her paralegal degree from Woodbury College.

**Tiago Sousa**



Tiago is providing assistance in the China partnership, filling in for Amanda McAdams who is on maternity leave until later this fall. Tiago is the partner of an incoming student and originally comes from Brazil. He earned a BS in business management from Utah Valley University.

**Hanling Yang**



Hanling joins VLS as an associate director of the U.S-China Partnership for Environmental Law and assistant professor of law. She comes to us from Portland, Oregon, where she served at the International Sustainable Development Foundation, training Chinese government officials in land-use planning and governance issues.

Hanling earned a BA in English from Wuhan University and a JD from Lewis and Clark Law School. She, her husband, and daughter currently live in South Royalton.

+++++

**Benefits Update**

Clarke Collins, Senior Benefits Administrator



**Changes to the Dental Benefit**

We had a number of changes to our Northeast Delta Dental benefits this year. Here is a summary of what was changed:

- Diagnostic and preventive care is now covered at 100%. This includes your semi-annual cleanings and any diagnostic services (i.e., x-rays) that are associated with the cleanings.
- Diagnostic and preventive care will no longer count toward your annual maximum. This means that the full \$1,000 per person, per year maximum benefit will be completely reserved for major care.
- Dental implants will now be covered under the major benefit category.
- Orthodontia, unfortunately, will no longer be covered.

So, with these new benefits in place, please consider getting that semi-annual cleaning! Here are some great reasons to schedule your visit today:

- Dental professionals can use today’s dental exams to screen for oral cancers and other health issues (including diabetes) that can be difficult to spot on your own. More than 120 diseases can cause specific signs and symptoms in and around the mouth and jaw.
- Checkups allow your dentist to keep up with changes to your health status. Upon learning of medical conditions you’ve developed or treatments you’re receiving, your dentist can recommend strategies to help you proactively counter the negative effects the conditions and treatments would otherwise have on your oral health.
- Preventive checkups provide dentists with opportunities to identify and intervene early in dental disease. This can reduce any pain and the financial costs associated with more severe forms of dental diseases. If caught early, periodontal

Vermont Law School | 164 Chelsea Street, PO Box 96 | South Royalton, Vermont 05068

disease is easier to manage and, in some cases, reverse.

**Changing Physicians**

A patient’s needs and fit with a physician may change over time. If you had a daughter graduate from high school this year, for example, this may be a good time to transition from a pediatrician to a family practice or internal medicine doctor who provides Pap tests, pelvic and breast exams, so visits for preventive care can be one-stop shopping. If you are going through menopause and have been using an OB/GYN doctor for primary care, you may want to establish a relationship with a family practice or internal medicine doctor to address health needs that can arise in middle age. Older patients taking many medications may do well to choose a board-certified geriatrician specializing in elder care.

In choosing a physician, consider the following:

- Current board certification in the specialty for which you are seeking care (see [www.abms.org](http://www.abms.org)) and no state or federal sanctions (see [www.docinfo.org](http://www.docinfo.org))
- Unrestricted medical staff privileges at the hospital you want to use
- Office hours and appointment wait times that work for you
- A good fit with your personality, evaluated through a personal interview
- Attitude and behavior of medical assistants and office staff

When going through life transitions, take the opportunity to revisit your choice of doctor(s) to help ensure the best fit with your changing health needs.

**Fruits in Season**

Whether you shop at your local grocery store or a roadside farmer’s market, summer is the best time to enjoy fruits and vegetables grown close to home. Since it doesn’t need to travel as far, locally grown produce is usually fresher and has been handled less.

Large grocery chains often post “locally grown” signs. The produce manager will be able to tell you where the fruits and vegetables come from, and the tiny labels put on some produce also show where it was grown. At roadside stands and farmer’s markets you can usually talk to the growers. If you’re looking for a farmer’s market near you, visit [www.localharvest.org](http://www.localharvest.org).

Use your senses to buy the best:

Sight: Look closely and check for shape and color as well as cuts, bruises, or signs of decay. The natural white powder you see on grapes and blueberries, for example, is a sign of freshness.

Even if you do trim off decay, the produce is likely to spoil more quickly, and the damage can affect nutrient content.

Touch (carefully): Fruits that are too soft may be overripe. Vegetables should be firm or crisp, not soft, springy, or mushy.

Smell: Ripe summer fruits, particularly peaches, nectarines, and melons, have a flowery fragrance.

Taste: Don’t be shy; ask for a sample.

+++++

**IT Corner**



**62 Trillion Spam Emails = ?**

According to a report released this week by computer security company McAfee, spammers last year generated a whopping 62 trillion junk emails. What does that mean in terms of energy? The electricity used sending the emails could have powered 2.4 million homes for a year or driven a car around the planet 1.6 times, according to the report.

McAfee researchers say each junk email emits 0.3 grams of the greenhouse gas carbon dioxide. Spam-related emissions for all email users around the world in 2008 totaled 17 million metric tons of CO2, according to ICF International, the consulting firm that partnered with McAfee on the study. That’s .2 percent of the total global emissions. About 85 to 91 percent of all email is spam, but consumers can decrease their spam load by surfing the Net with a bit more care. For example, think twice before using the auto-complete feature on your browser because it may allow spammers to harvest personal information.

You won’t be seeing all the spam emails you receive because most of it will not even get to your inbox or junk mailbox. The most obvious spam is already blocked by Postini, the anti-spam service Vermont Law School subscribes to. To get an idea of how much an anti-spam appliance blocks, one company has an average of 9,000 emails per day and only 500 are legit, and this is just for 100 users.

**PC Tips of the Month**

**For Microsoft Office Excel 2010**

**Sorting by more than one column or row**

You may want to sort by more than one column or row when you have data that you want to group by the same value in one column or row, and then sort another column or row within that group of equal values. For example, if

Vermont Law School | 164 Chelsea Street, PO Box 96 | South Royalton, Vermont 05068

you have a Department column and an Employee column, you can first sort by Department (to group all the employees in the same department together), and then sort by name (to put the names in alphabetical order within each department). You can sort by up to 64 columns.

Note: For best results, the range of cells that you sort should have column headings.

1. Select a range of cells with two or more columns of data, or make sure that the active cell is in a table with two or more columns.
2. On the Data tab, in the Sort & Filter group, click Sort.
3. Under Column, in the Sort by box, select the first column that you want to sort.
4. Under Sort On, select the type of sort. Do one of the following:
  - \* To sort by text, number, or date and time, select Values.
  - \* To sort by format, select Cell Color, Font Color, or Cell Icon.
5. Under Order, select how you want to sort. Do one of the following:
  - \* For text values, select A to Z or Z to A.
  - \* For number values, select Smallest to Largest or Largest to Smallest.
  - \* For date or time values, select Oldest to Newest or Newest to Oldest.
  - \* To sort based on a custom list, select Custom List.
6. To add another column to sort by, click Add Level, and then repeat steps three through five.
7. To copy a column to sort by, select the entry and then click Copy Level.
8. To delete a column to sort by, select the entry and then click Delete Level.
 

Note: You must keep at least one entry in the list.
9. To change the order in which the columns are sorted, select an entry and then click the Up or Down arrow to change the order. Entries higher in the list are sorted before entries lower in the list.
10. To reapply a sort after you change the data, click a cell in the range or table and then, on the Data tab, in the Sort & Filter group, click Reapply.

+++++

**Style Q&A**

Submitted by Jennie Clarke



Q: I'm creating an event

program that lists the names and titles of speakers and other distinguished guests. What is the proper etiquette for use of professional titles on a program?

A: While there are various forms of address, it is most important to be consistent and equitable when listing professional titles. Whenever possible, use the preference of the person being listed. The format for including a person's title on a program is much the same as it is when addressing a formal invitation.

As a general rule for capitalization, when a professional title immediately precedes the personal name, it is set in initial capital letters. Also use initial caps in a formal list, whether it precedes or follows the personal name. Titles are set in lower-case (except for proper nouns) in running text when alone or when following a personal name.

Professor Linda O. Smiddy

If in a formal list (such as a program):

Linda O. Smiddy, Professor of Law

but, in running text:

Linda O. Smiddy, professor of law, joined the faculty of Vermont Law School full-time in 1988.

Some titles, such as Esquire or The Honorable, are only used in specific situations, so be sure to use them correctly and consistently.

Attorneys who have been admitted to the bar and some court officials use "Esquire" or "Esq." following the name in formal contexts. Use of the title becomes complicated when listing many individuals because it requires the writer to confirm whether or not each individual is an attorney admitted to the bar. If "Esq." or "Esquire" is used, do not include "Mr." or "Ms." or the like before the personal name.

Mary Smith, Esquire

or

Mary Smith, Esq.

"The Honorable" may be used for current or former high officials in federal, state, or local government, such as members of congress, judges, governors, mayors, or ambassadors. Do not use in combination with other professional titles.

The Honorable John Paul Stevens

but not

The Honorable Associate Justice John Paul Stevens

In most instances, Vermont Law School follows Chicago Manual of Style (CMS). Many style questions are answered in the CMS's Q&A section online at [www.chicagomanualofstyle.org/CMS\\_FAQ/qatopics.html](http://www.chicagomanualofstyle.org/CMS_FAQ/qatopics.html). The University of Virginia also has a good online resource, whether you are addressing a letter or envelope, or designing a program:

Vermont Law School | 164 Chelsea Street, PO Box 96 | South Royalton, Vermont 05068

[www.umw.edu/policies/style\\_guide/protocol\\_\\_forms\\_address/default.php](http://www.umw.edu/policies/style_guide/protocol__forms_address/default.php)

+++++

**PUZZLE CORNER**

Please send your responses to:  
 ptrombly@vermontlaw.edu  
 The names of the first 10 correct responders will be put in a hat with one drawn to receive a prize.

*Nothing is in it, but something is in it.  
 Nobody is in it, but somebody is in it.  
 If you have it, you and I are in it.  
 What is it?*

+++++

**Upcoming Events**



Check the campus calendar on the website for more information on these events.

**Orientation Week**

- August 23: Welcome Back Breakfast, Welcome Ceremony, Dean’s Barbecue
- August 25: Bread and Puppet Theater
- August 26: Diversity Training (mandatory); Contra Dance; Faculty Mentor Lunch
- August 27: Dean’s Picnic
- August 30: First Day of Classes
- September 2: Pie for Breakfast (Staff)
- September 6: Labor Day Holiday
- September 25: Chase Race & Reunion Weekend
- September 28: Town Hall Meeting
- October 15: Trustees Visiting Day
- October 16: Trustees Board Meeting

**The “Safe Passing” Law: What It Means for Vermont’s Roadway Users**

New legislation that offers protections to Vermont’s “vulnerable” roadway users was signed by Governor Douglas on May 20. The law, Act



114, defines pedestrians, people in wheelchairs, bicyclists, people on horseback, roller skiers and others as “vulnerable users.” Essentially, those who aren’t completely encased in metal are much more susceptible to injury and are, therefore, in this category of roadway users.

The Vermont Bicycle & Pedestrian Coalition (VBPC), a statewide nonprofit education and advocacy organization, spearheaded a grassroots effort that resulted in the “Safe Passing” bill clearing key committees and both chambers of the legislature. The full text of the new law can be viewed on the home page of the VBPC: [www.vtbikeped.org](http://www.vtbikeped.org)

In brief, here’s how the law will benefit all bicyclists and pedestrians in Vermont:

- Motorists are now required to pass bicyclists, pedestrians, people on horseback, roller skiers, and other vulnerable roadway users with “due care, which includes increasing clearance, to pass the vulnerable user safely”
- All those in motor vehicles now are prohibited from throwing objects at vulnerable users and from harassing them in other ways, such as approaching them too closely and too rapidly
- Bicyclists may now (legally) indicate their intention to make a right turn by using their right arms
- Bicyclists may now (legally) move to the left to make a left turn, avoid a hazard in the roadway, or pass another roadway user
- Bicyclists, when riding at night, are now required to have a light on the rear (attached to either the bike or cyclist) or at least 20 square inches of rear-facing reflective material/reflectors on the bicycle/bicyclist

All of the above changes will help improve conditions on Vermont’s roadways for those who enjoy bicycling, running, walking, horseback riding, roller skiing, roller skating, and other activities.

-----  
 From the thoughtful side:

*The game of life is the game of boomerangs. Our thoughts, deeds and words return to us sooner or later, with astounding accuracy.*

Florence Shinn (1871-1940)  
 Writer

